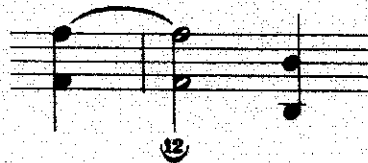


Performance notes  
Sonata quasi una Fantasia Second Section in the sonata  
number 14, opus 27, no. 2  
L. van Beethoven

- Page 9, measure 1: Maintain the integrity of a minuet tempo. This should be a brightly performed section, not as a scherzo at all. It is a transitional development between the first and third movements, and there should be no improvisation of tempo, rhythm, or phrasing.
- Page 9, measure 10: Keep the right hand staccato as lyrical as possible, never a sharp attack against the melody.
- Page 13, measure 8: Finger substitution has been suggested as



I found the use of the sostenuto pedal effective in this passage, used lightly in the place of the sustain pedal as to create a legato effect. The finger substitution is indeed a difficult one to comfortably apply here, especially for younger players.